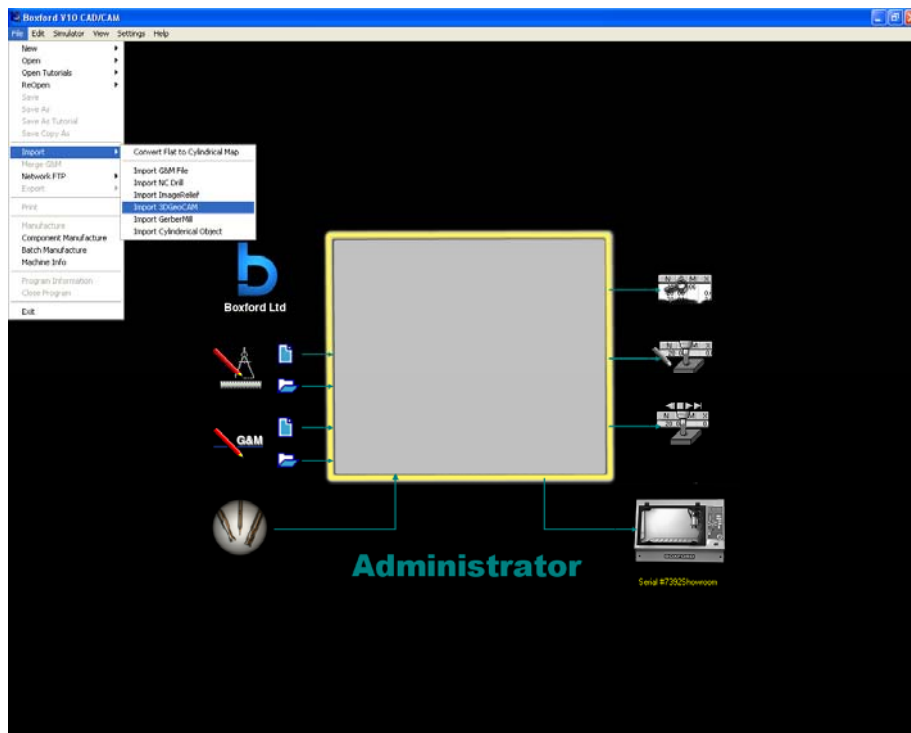


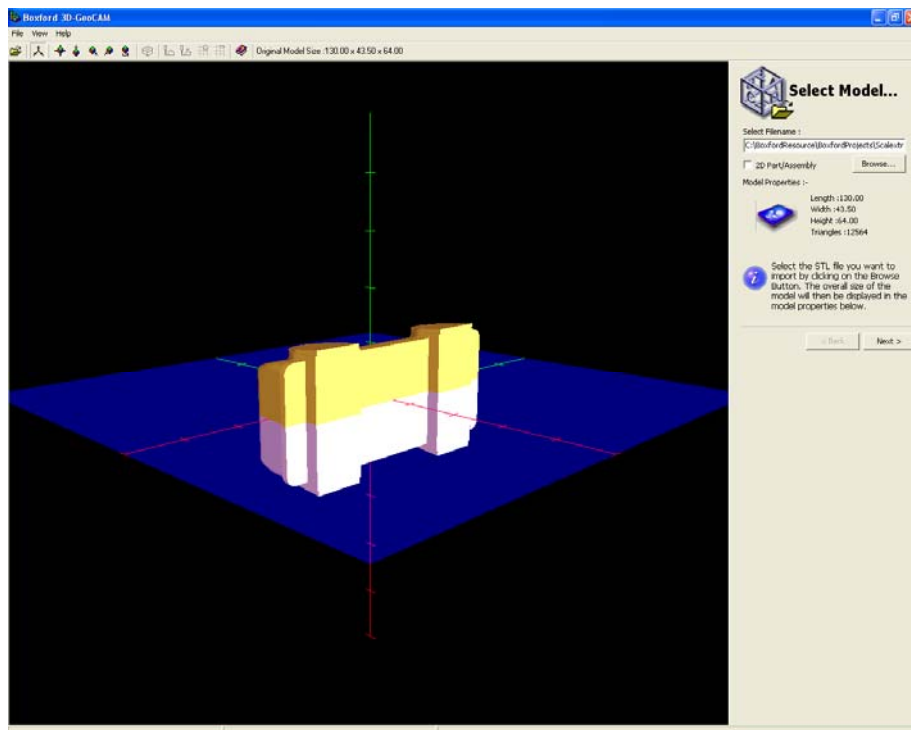
Scalextric In 3DGeocam



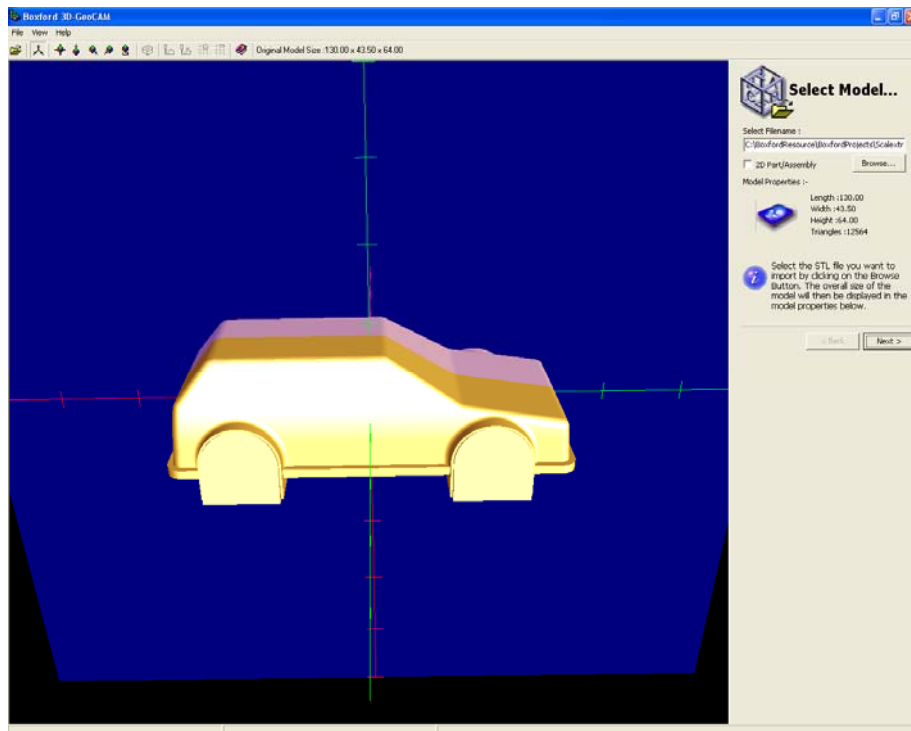
Select Import – Geocam



Select an STL model.

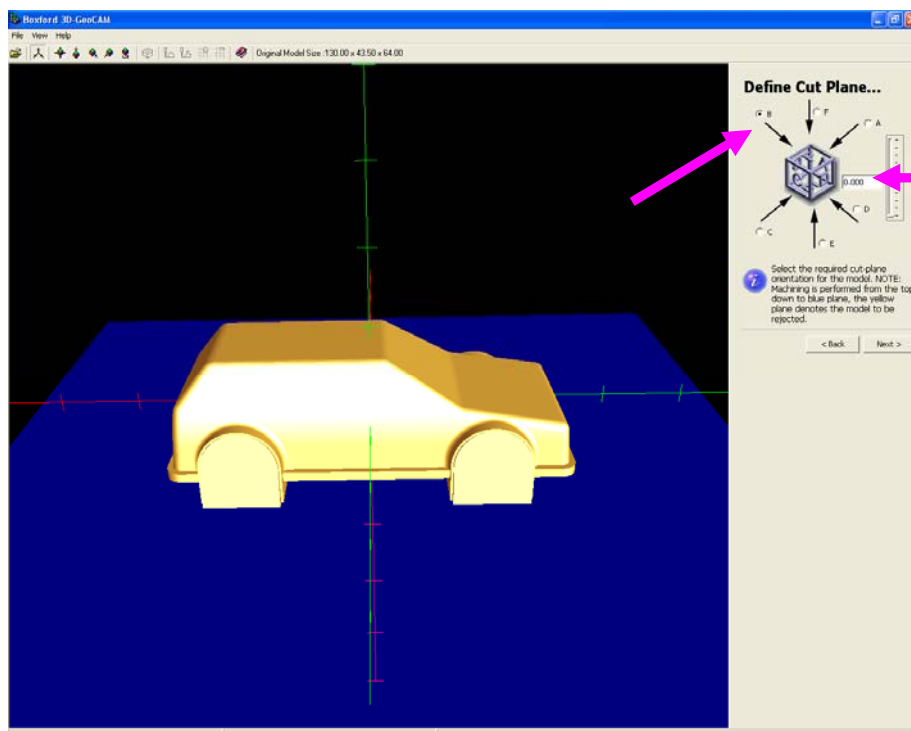


Select Model.
Orient the model in space.



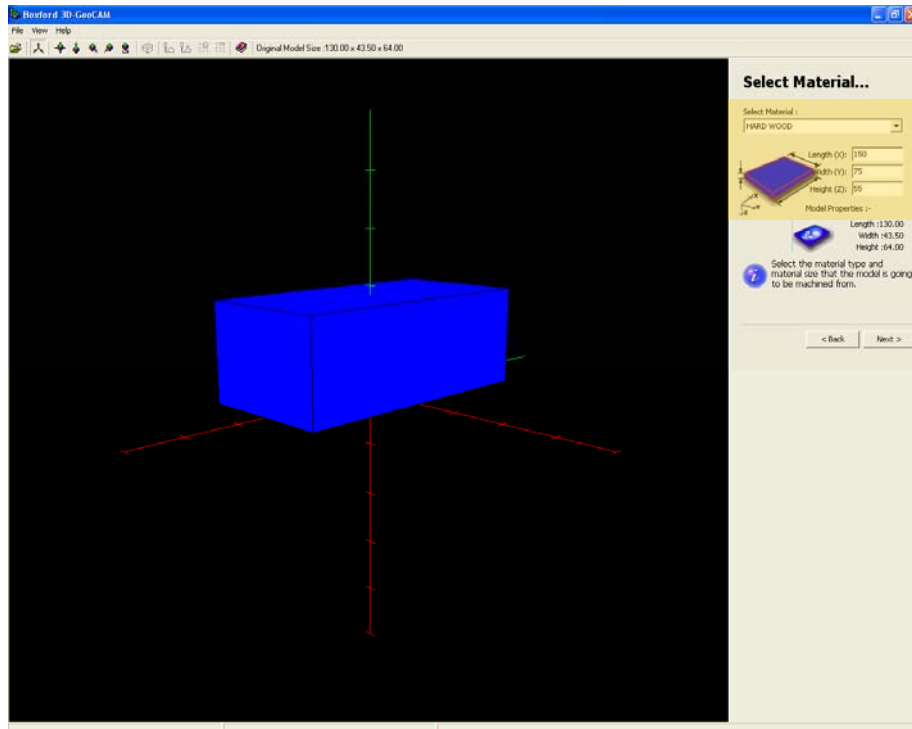
Define Cut Plane

Select the cut plane so that the blueside is on top and move height to zero.



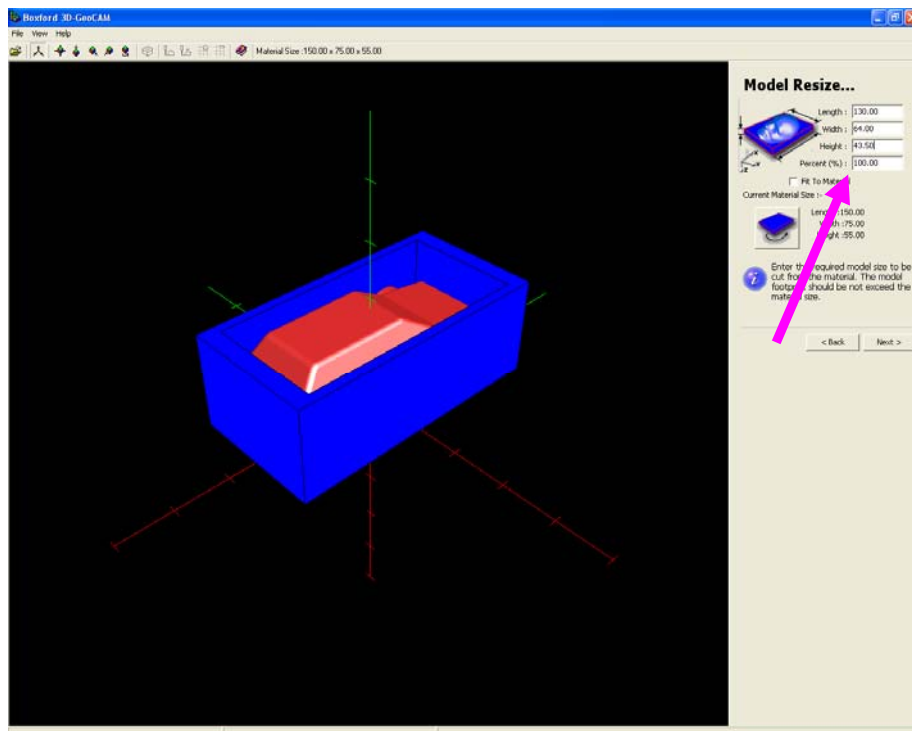
Select Material

Change Values suit screen. – Hardwood - Length 150 – Width 75 – Height 55



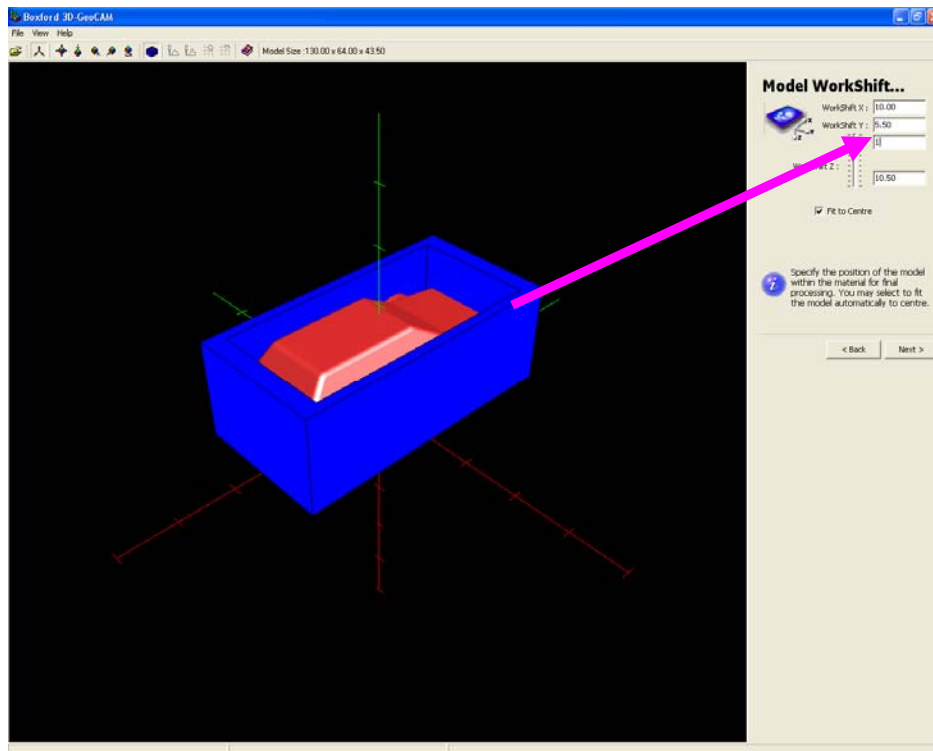
Model Resize

Change the percentage to 100



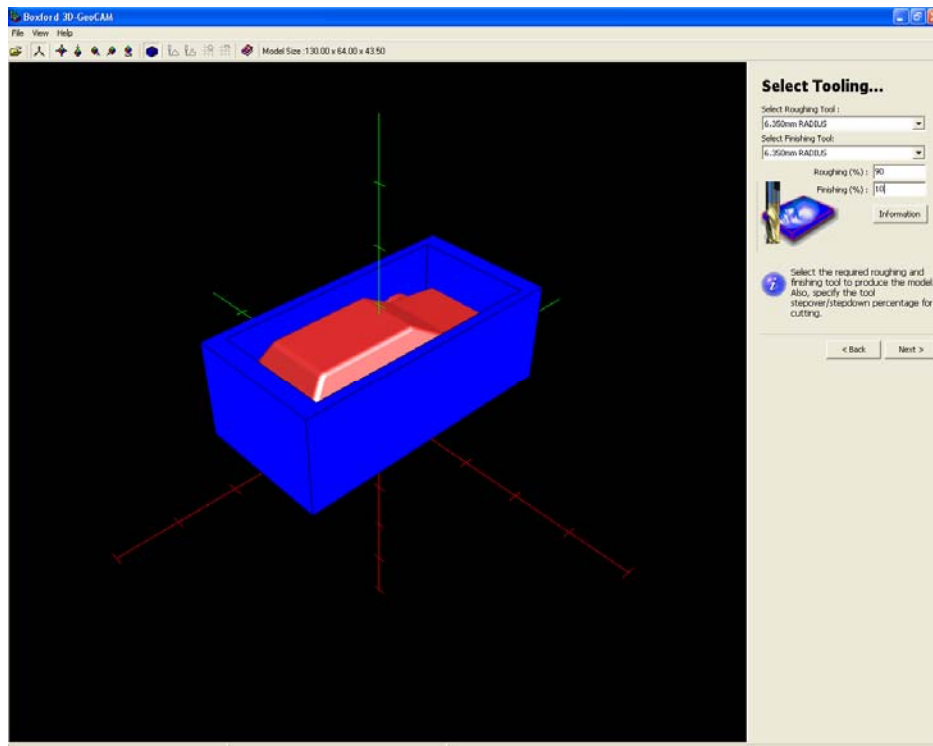
Model Workshift

Alter Z to 1mm



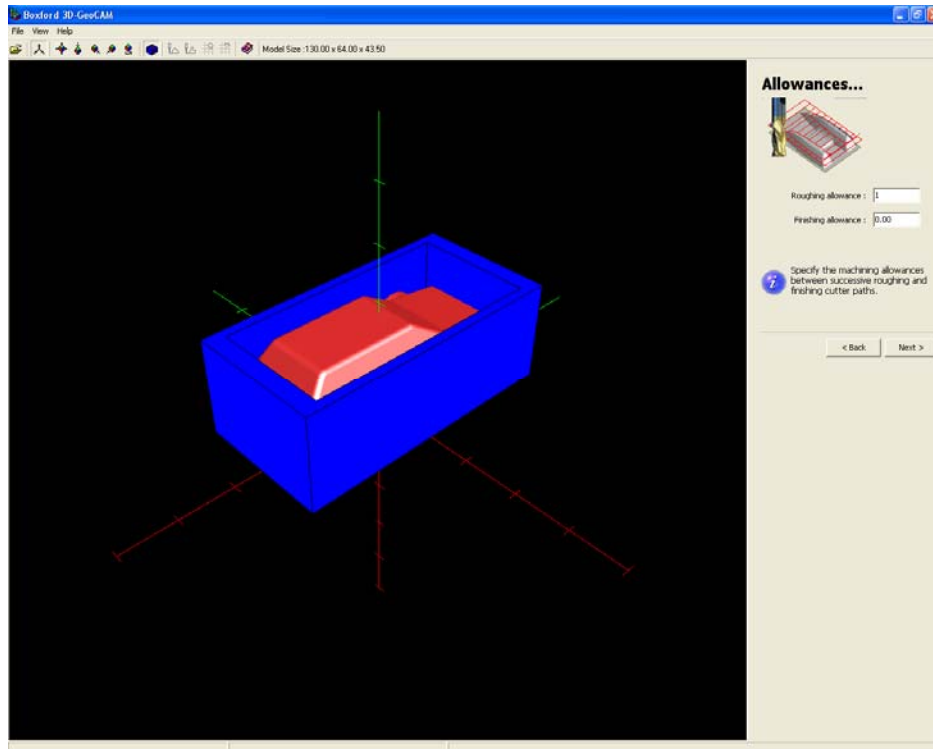
Select Tooling

Select 6.35mm Radius for both tools then 90% and 10% respectively.



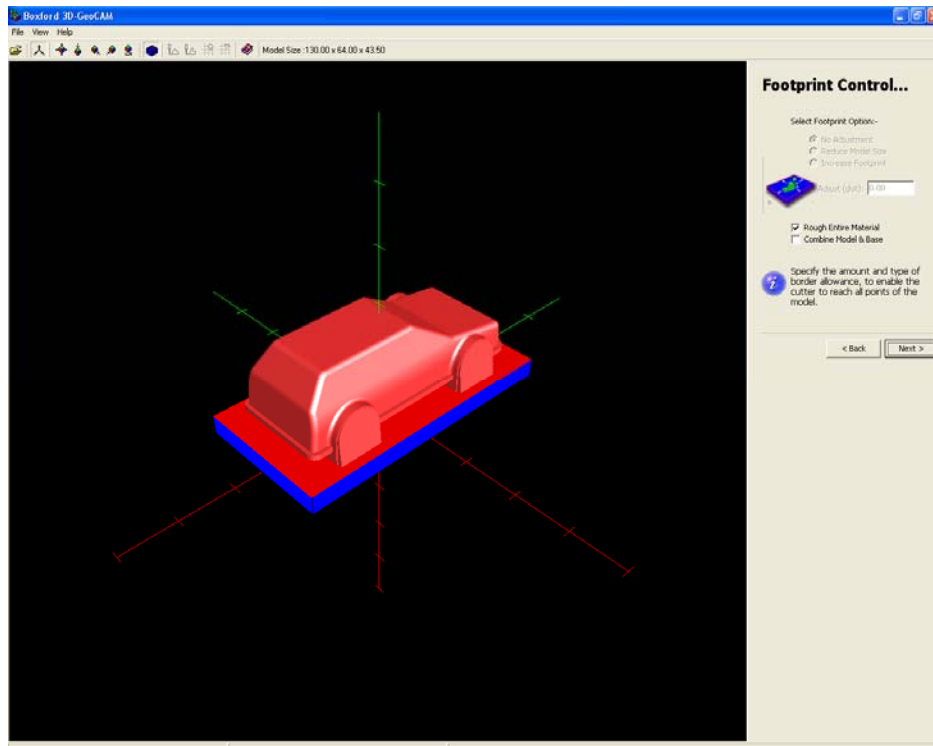
Allowances

Set roughing to 1mm and finishing to 0mm



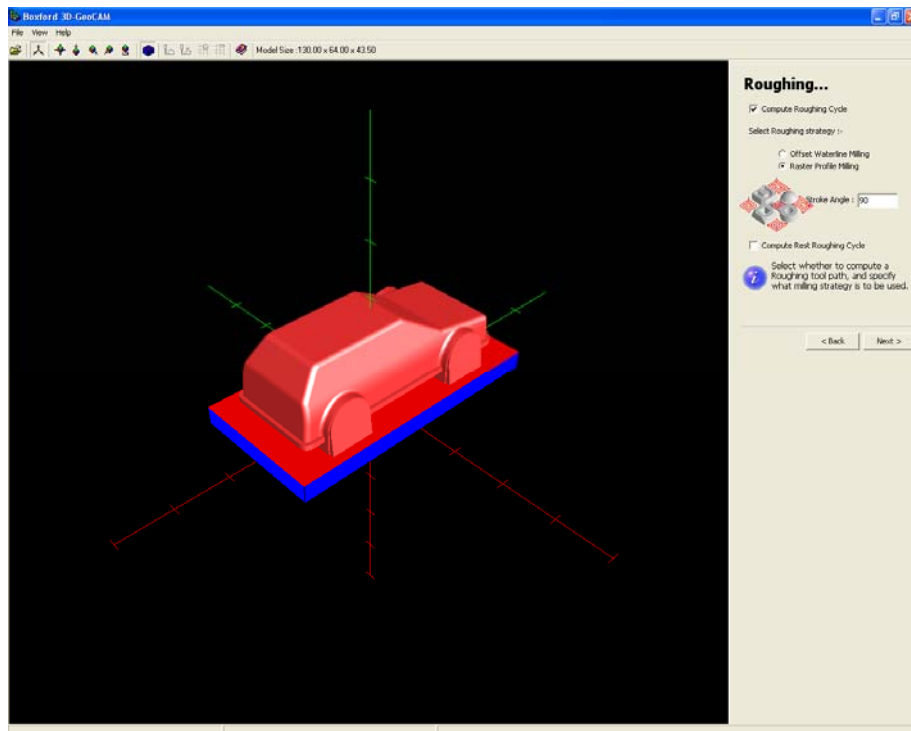
Footprint Control

Tick Rough entire material



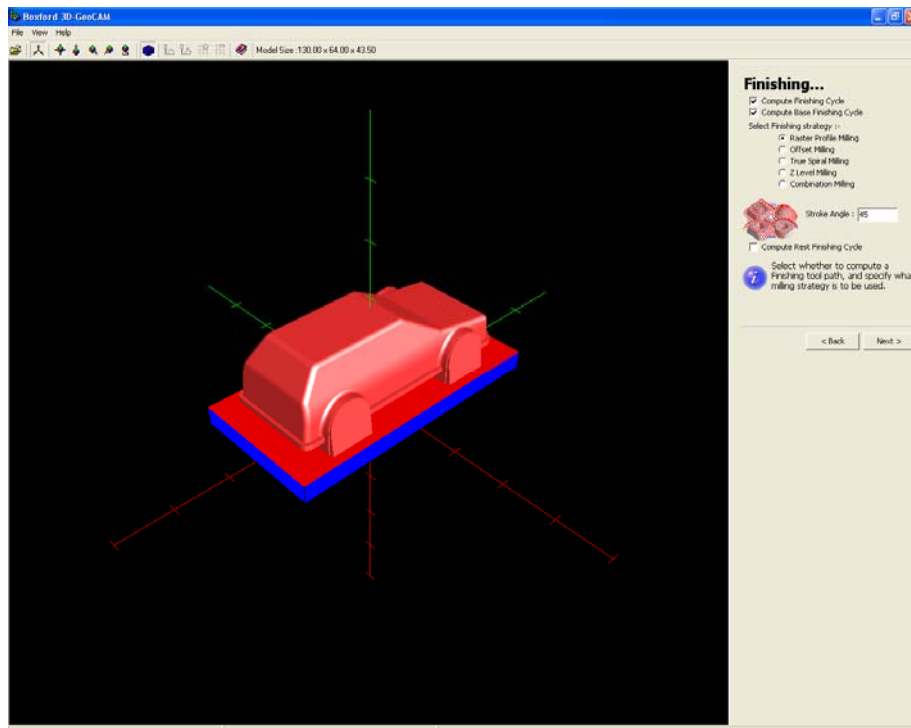
Roughing

Set to Raster and 90 Degrees.



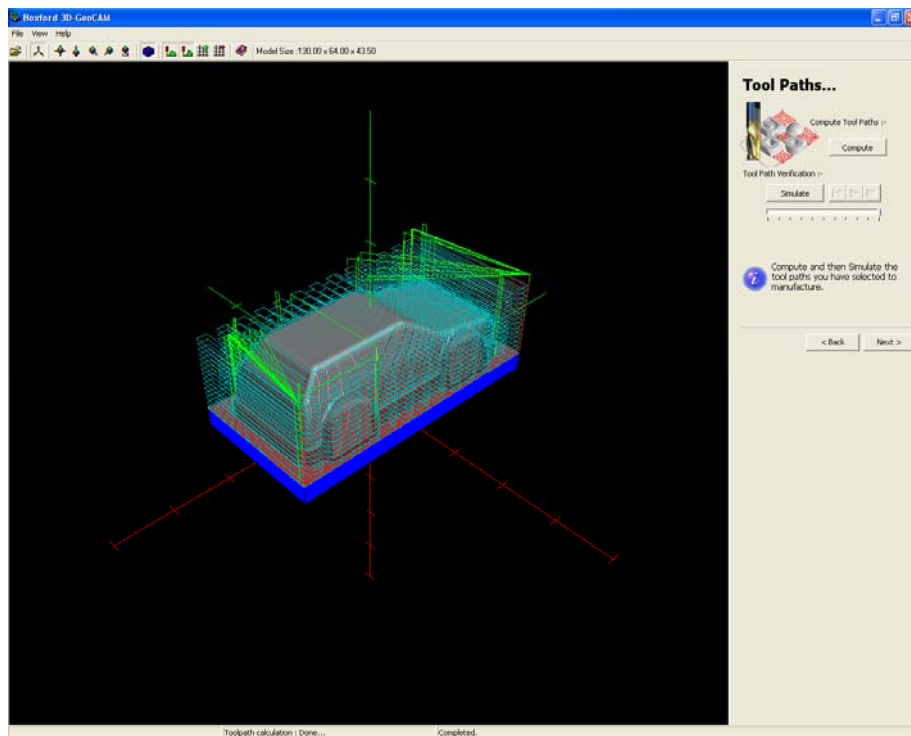
Finishing

Tick Compute Finishing and Base Finishing cycle – raster milling and 45 Degrees.



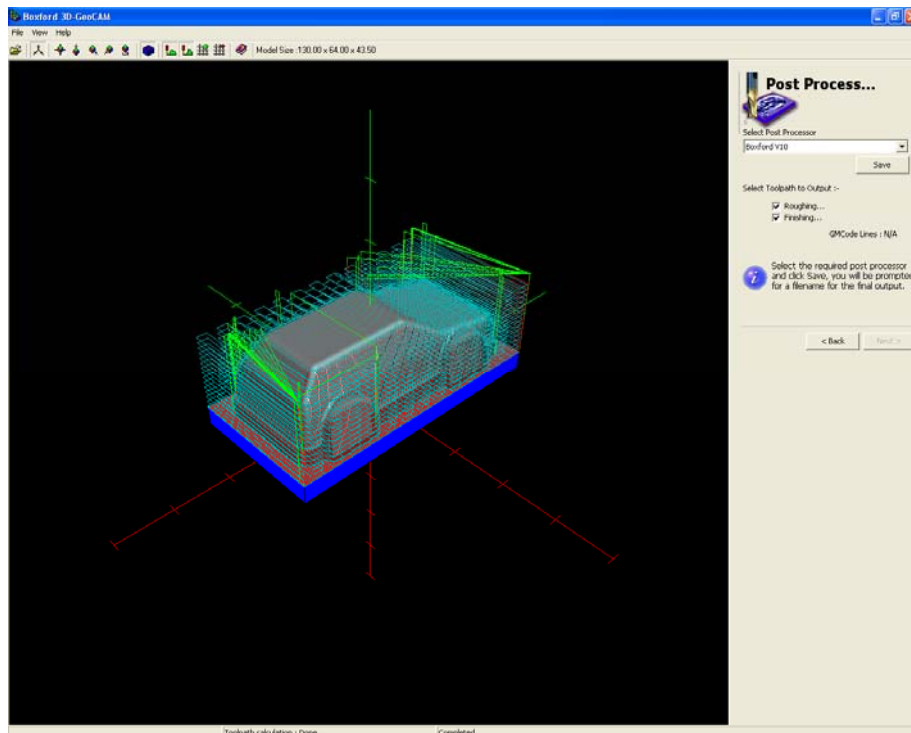
Toolpaths

Touch Compute

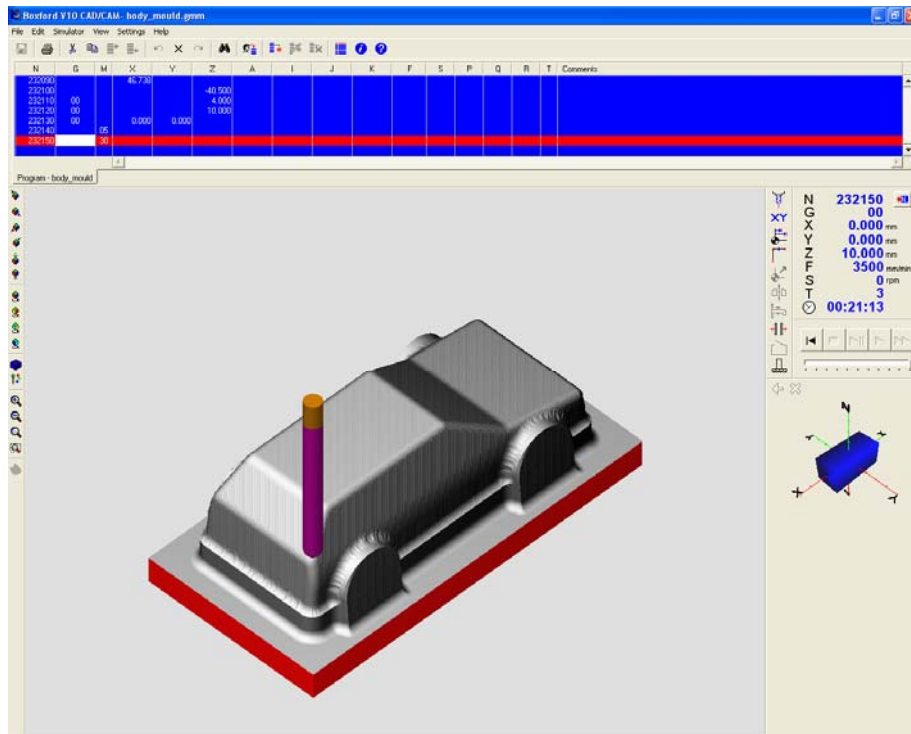


Post Process

Save the files with finishing and roughing ticked.



The software will then simulate the manufacturing.



We are now ready to manufacture the model.

